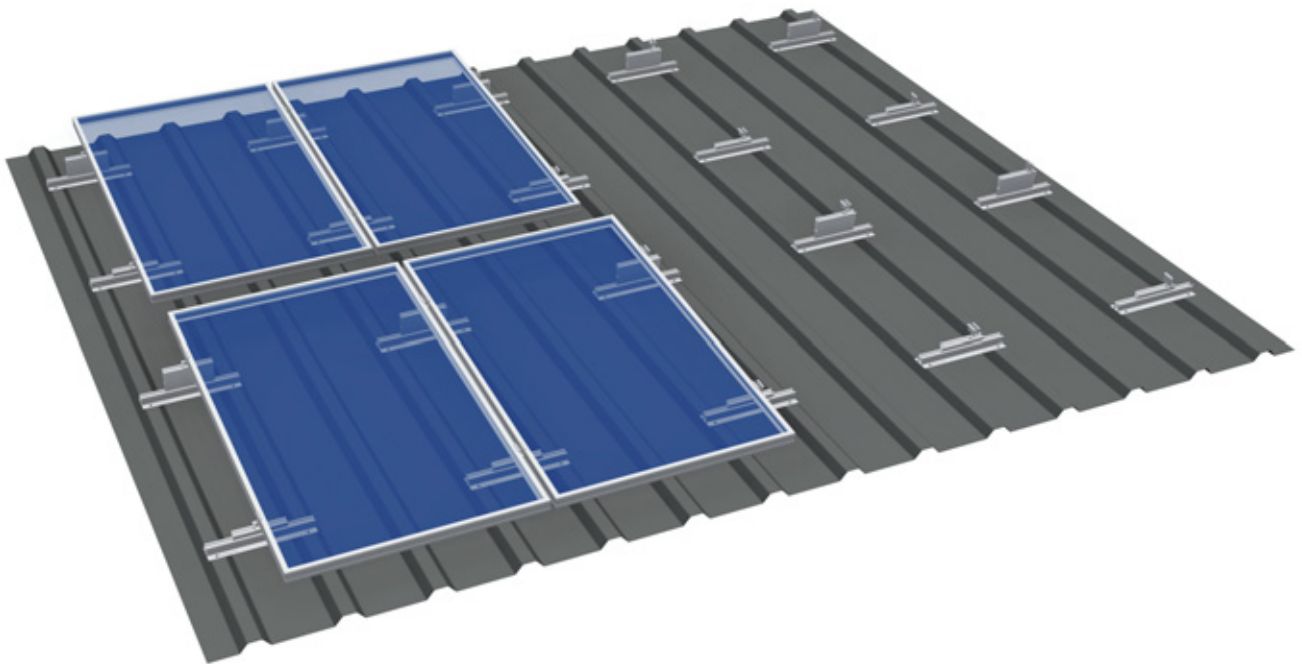




TRAPEZOIDAL SHEET METAL RAIL LIFT

for trapezoidal sheet metal roofs



Fast installation

The light, material-efficient construction and the prefabrication of S:FLEX' trapezoidal sheet metal rail Lift with 24 holes and sealing tape allow for fast installation on trapezoidal sheet metal roofs.

The rails are attached directly to the raised seams of the trapezoidal sheeting using suitable fasteners (e.g. rivets or sheet metal screws) and are equipped with easy-to-insert adapters as module supports.

Optimal yields

The trapezoidal sheet metal rail Lift offers a simple yet effective solution for PV systems installed on flat or slightly inclined roof surfaces: The different heights of the adapters allow for a module pitch of 5° with vertical installation and 7° with horizontal installation. This ensures an optimum irradiation angle and enhanced self-cleaning properties of the modules, leading to greatly improved yields.

Simple, customised planning

Our planning tool allows you to create an exact, specific plan for each installation site. Wind and snow loads applicable to the existing roofing are always also taken into account. The structural integrity of the building is not affected by the mounting system.

Comprehensive module compatibility

Virtually all framed module types in popular sizes can be installed either vertically or, provided the manufacturer permits clamping on the short side, horizontally.

Long service life

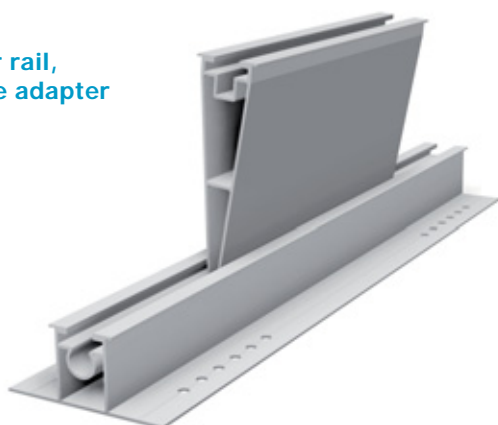
All components of the S:FLEX Lift trapezoidal sheet metal rail system are produced entirely from aluminium and stainless steel. The high corrosion resistance guarantees a maximum lifespan and provides the possibility of complete recycling.

TRAPEZOIDAL SHEET METAL RAIL LIFT

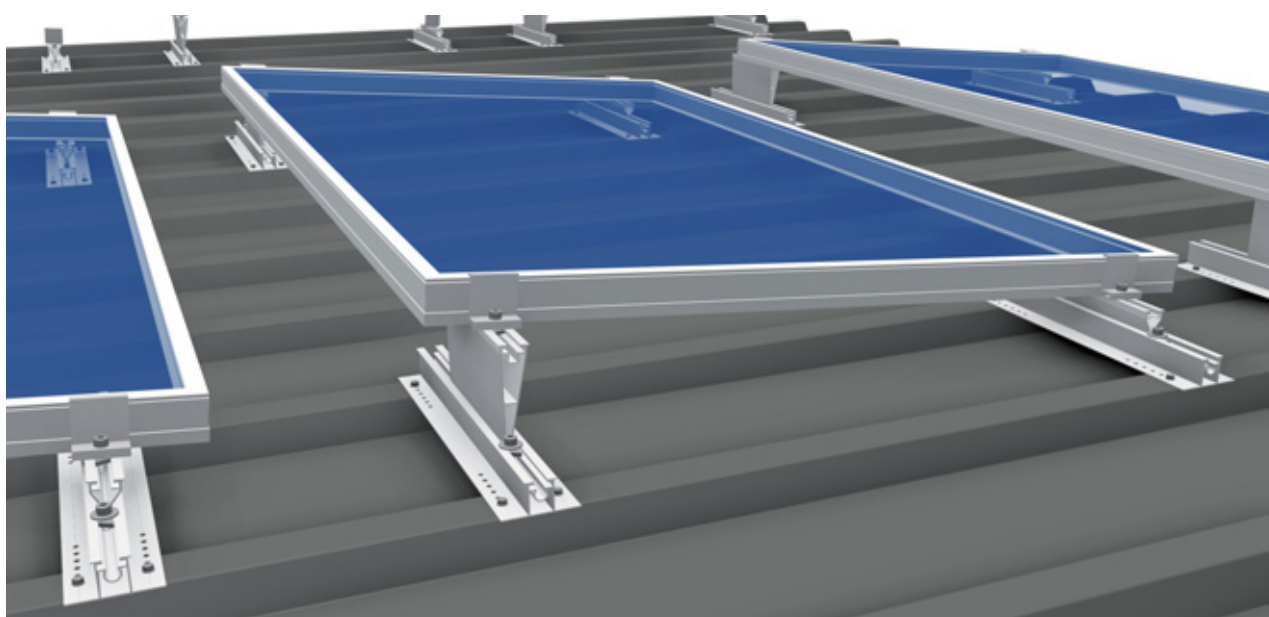
for trapezoidal sheet metal roofs

Technical Data

Rear rail,
large adapter



Front rail,
small adapter



Application	Trapezoidal sheet metal
Module type	Framed modules
Module orientation	Vertical / horizontal
Module pitch	5° with vertical installation 7° with horizontal installation
Module inclination	Max. 20° towards horizon
Roof pitch	Max. 15° with vertical installation Max. 13° with horizontal installation
Module field length	Max. 12 m
Max. load	5.4 kN/m ² (wind and snow load combined)
Fastening	Riveted or screwed with sheet metal screws to the raised seams
Seam spacings	100 – 333 mm
Sheet metal thickness	Sheet steel min. 0.5 mm Aluminium min. 0.8 mm
Material	Aluminium EN AW 6063 / T66, Stainless steel, EPDM seals
Colour	Natural, extruded finish