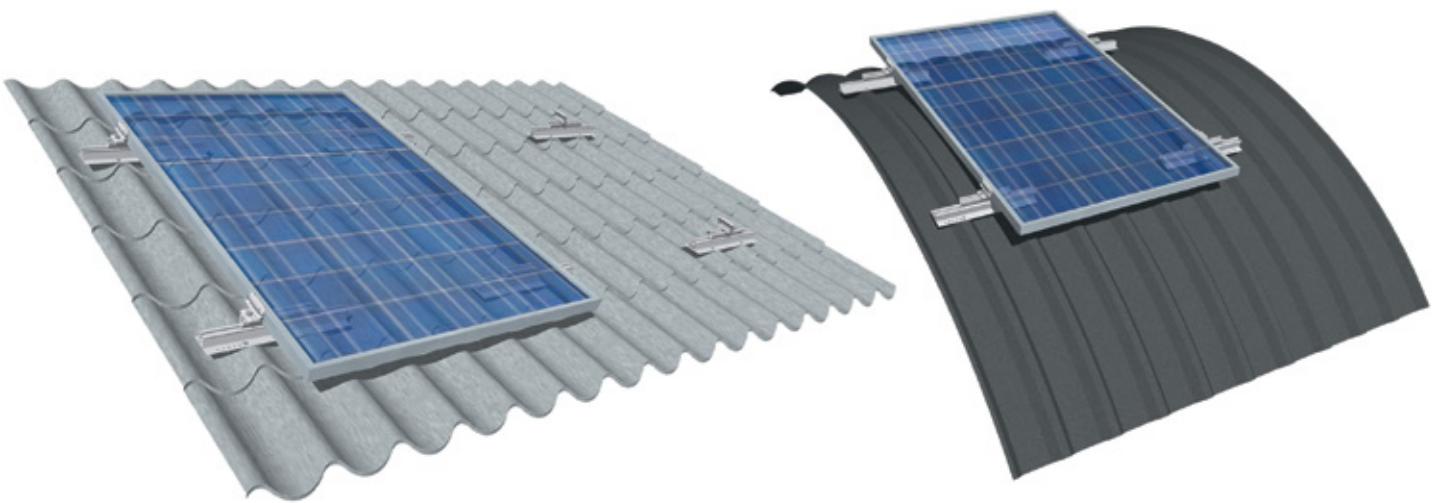




## TRAPEZOIDAL SHEET METAL RAIL VARIO

for corrugated roof tile and barrel roofs



### Fast installation

The light, material-efficient construction and the prefabrication of S:FLEX' trapezoidal sheet metal rail Vario with 24 holes and sealing tape allow for fast installation on corrugated roof tiles and barrel roofs with trapezoidal sheet metal covering.

The rails are attached directly to the raised seams of the trapezoidal sheeting using suitable fasteners (e.g. rivets or sheet metal screws) and are equipped with easy-to-insert adapters as module supports.

### Tension-free module fields

The trapezoidal sheet metal rail Vario with its mobile and inclinable adapters allows tension-free installation on curved roofs and on the graduated surfaces of corrugated roof tile coverings.

### Simple, customised planning

Our planning tool allows you to create an exact, specific plan for each installation site. Wind and snow loads applicable to the existing roofing are always also taken into account. The structural integrity of the building is not affected by the mounting system.

### Easy to handle, cost-efficient logistics

With its short rails, the system saves costs in terms of storage and transport. The practical dimensions of the rails also make work easier on site.

### Long service life

All components of the S:FLEX trapezoidal sheet metal rail Vario system are produced entirely from aluminium and stainless steel. The high corrosion resistance guarantees a maximum lifespan and provides the possibility of complete recycling.

# TRAPEZOIDAL SHEET METAL RAIL VARIO

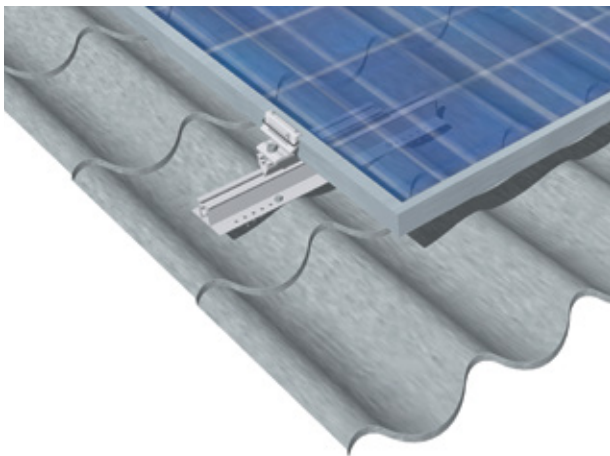
for corrugated roof tile and barrel roofs

## Technical Data

Trapezoidal sheet metal rail Vario, incl. adapter



Differences in the levels of roof coverings featuring corrugated roof tiles are compensated



<b>Application</b>	Corrugated roof tiles and curved trapezoidal sheet metal (barrel roofs with a radius > 3.5 m)
<b>Module type</b>	Framed modules
<b>Module orientation</b>	Vertical/horizontal
<b>Module / roof inclination</b>	Max. 20° towards horizon
<b>Module field length</b>	Max. 12 m
<b>Max. load</b>	5.4 kN/m <sup>2</sup> (wind and snow load combined)
<b>Fastening</b>	Riveted or screwed with sheet metal screws to the raised seams
<b>Seam spacings</b>	100 – 333 mm
<b>Sheet metal thickness</b>	Sheet steel min. 0.5 mm Aluminium min. 0.8 mm
<b>Material</b>	Aluminium EN AW 6063 / T66, Stainless steel, EPDM seals
<b>Colour</b>	Natural, extruded finish

