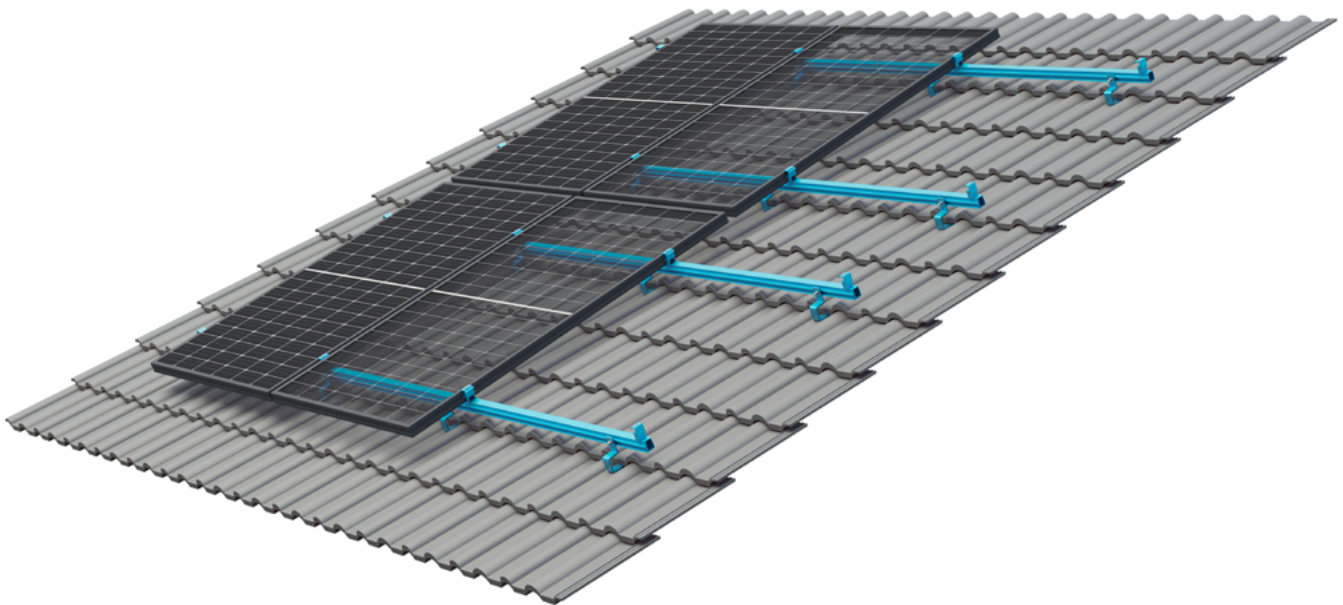




## Technical Data

# S:FLEX PITCHED ROOF STRUCTURE

for tiled roofs



### Flexible Application

The S:FLEX pitched roof system allows for easy installation of framed and frameless photovoltaic modules on old and new buildings with all common kinds of roofing (tiles, plain tiles, slates).

### Quick Assembly

The S:FLEX pitched roof mounting structure has numerous pre-assembled parts. The click technology further reduces assembly time. Spanners of two different sizes are the only required tools on the roof, and the detailed assembly instructions ensure an easy installation.

### Excellent Adaptability

Roof hooks are suitable for all kinds of tiles. They can be adjusted laterally and in height. Variable system height capability enables level PV arrays on uneven roof surfaces.

### Extensive Module Compatibility

Height-adjustable module clamps and end clamps allow for maximum flexibility when mounting framed modules from 30 to 50 mm thick. We can also provide certified laminate clamps for frameless modules.

### Maximum Security

If required, S:FLEX can provide structural design services for the mounting structure in compliance with the 2006 International Building Code.

### Long Service Lifetime

All major components are made of aluminum and stainless steel. High corrosion resistance ensures a maximum service life, and all components are recyclable.

# S:FLEX PITCHED ROOF STRUCTURE

for tiled roofs

## Technical Data

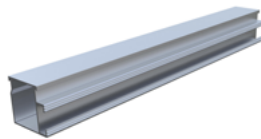
End clamp EH AK II  
Klick 30-50 A



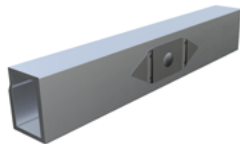
Mid clamp MH AK II  
Klick 30-50 A



ST-AK 5/40  
l=3.600



Splice 5  
grounding



S:FLEX Roof hook  
Hybrid 112-7-46  
8 mm II



S:FLEX Roof hook  
Alu 93-7-40



<b>Application</b>	Pitched roof
<b>Roofing type</b>	Roofing tiles, plain tiles, slates
<b>Roof pitch</b>	Up to 75°
<b>Building height</b>	25 m max.
<b>Wind load</b>	Up to 2,4 kN/m <sup>2</sup>
<b>Snow load</b>	Up to 5,4 kN/m <sup>2</sup>
<b>Module type</b>	Framed and frameless
<b>Layers of rails</b>	Single or double layer
<b>Module orientation</b>	Portrait / landscape
<b>Module field size</b>	max. 13.20 m connected module array
<b>Height adjustment</b>	Up to 92 mm (dependent on system)
<b>Material</b>	Aluminium EN AW-6063 T6, EN AW-6082 T6, Plain tile and slate: A2 stainless steel, Hybrid: Steel S235
<b>Mounting rails</b>	Extruded aluminum EN-AW-6063 T6
<b>Small parts</b>	Stainless steel X5CrNi18-10 A2-70
<b>Lightning protection</b>	Optional
<b>Colour</b>	Nature, press blank, black anodised (Mid & end clamps, DH Alu 111-9-45, DH Alu 93-7-45)
<b>Warranty</b>	10 years on durability of materials

These roof hooks are shown as an example. You can find the entire range at [sflex.com](https://sflex.com)