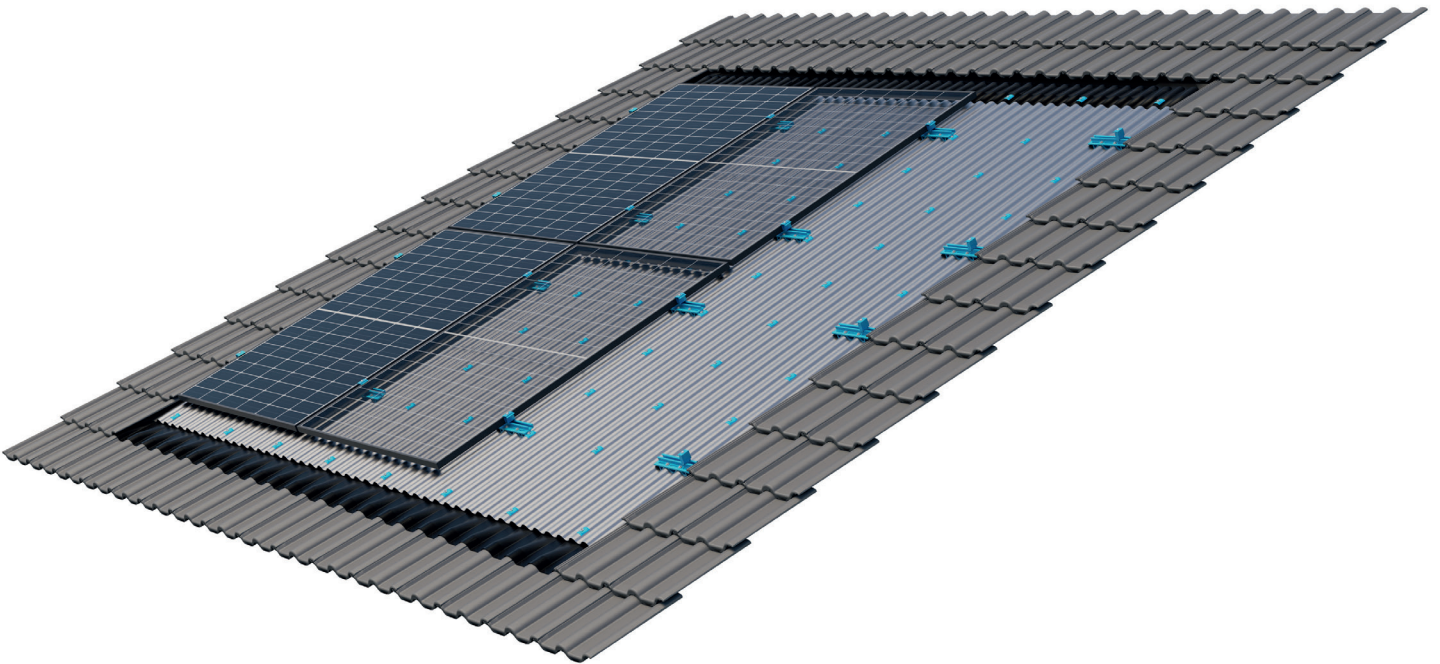




## S:FLEX INmount

PV in-roof system for pitched roofs



### Appealing appearance – perfect functionality

The S:FLEX INmount in-roof system allows the solar modules to be integrated into the roof surface in a particularly aesthetic way.

Its variable design and compatibility with all common solar modules and roof shapes makes the S:FLEX INmount suitable for almost all kinds of pitched roofs with a tile or concrete roof covering. Thanks to click technology and prefabrication, the mounting system can be quickly installed on the existing battens and replaces the conventional roof covering.

The optimised adapter connections of the module surface to the roof battens ensure direct force transmission, enabling the S:FLEX INmount to withstand high loads even in snowy regions.

### The benefits at a glance:

- Simple and quick to install solution for visually appealing roof integration in old and new buildings
- Suitable for roof coverings made of tiles/concrete roof tiles
- Optimum rear ventilation of the system thanks to the combination of corrugated sheet metal and short rails
- Connection to existing battens optimises force transmission and avoids thermal bridges
- Saving on roof tiles, for example, by eliminating the original roof covering in the area of the S:FLEX INmount system
- The system fulfils the criteria for hard roofing even without modules and thus guarantees protection against flying sparks
- All load-bearing and sealing components made of weather-resistant aluminium

# S:FLEX INmount

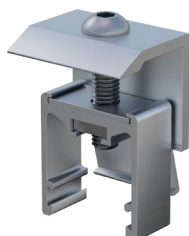
PV in-roof system for pitched roofs

## Technical Data

S:FLEX INmount  
Portrait adapter



End clamp  
AK II Klick 30-50



Mid clamp  
AK II Klick 30-50



\* Other roof pitches possible on request.  
Please contact our support via  
[support@sflex.de](mailto:support@sflex.de)

<b>Application</b>	Pitched roofs with tile/concrete tile roof covering
<b>Roof pitch</b>	22° – 75° *
<b>Roof construction</b>	Battening analogue to tile roofing
<b>Module type</b>	Framed (frameless with landscape mounting on request)
<b>Module size</b>	All common sizes
<b>Module orientation</b>	Portrait/ landscape
<b>Module field length</b>	12.60 m max. for contiguous module field
<b>Module layout</b>	Contiguous surfaces, covering of the entire roof surface and integration of skylights possible (prior inspection required)
<b>Total height of the PV system</b>	<b>Mounting in portrait mode:</b> 40 mm + module height <b>Mounting in landscape mode:</b> 30 mm + module height
<b>Materials</b>	Extruded aluminium (EN AW 6063 T66), aluminium (EN AW 3005/5005), stainless steel (V2A), EPDM (calotte), foam, butyl
<b>Colour</b>	Natural extruded finish; connection and corner plates, adapters as well as module clamps optionally in black
<b>Warranty</b>	10 years on durability of materials

